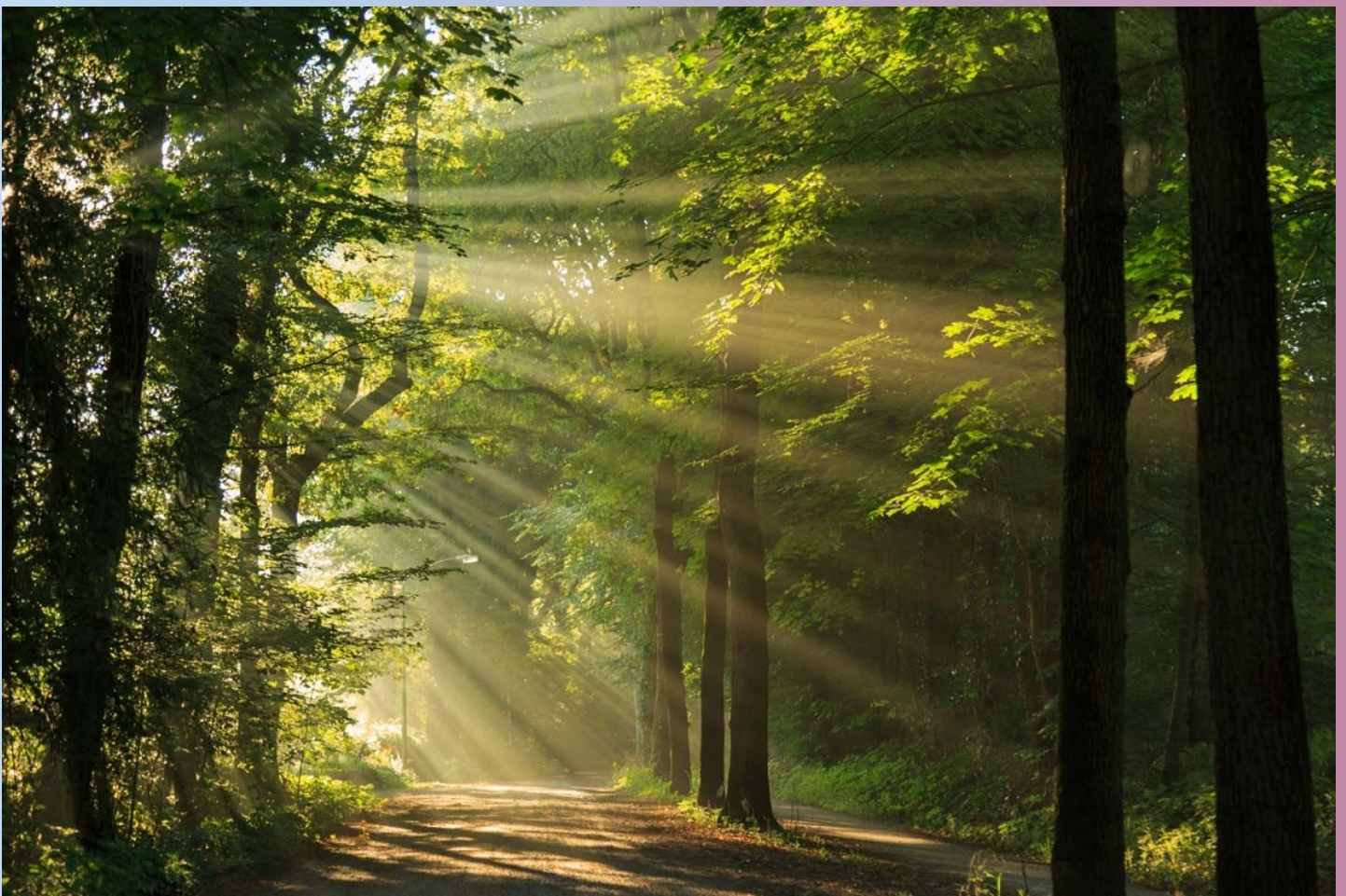


SRMC - *using our building again*

....next steps forward



## ***What can I expect?***

What will our familiar church building look like when we first start using it again? There will be tape on the floor, notices guiding us, fewer chairs, no coffee/tea, no singing for the time being.

**BUT**—this is the start of getting fellowship together moving again. It's only the first practical steps, and things will change as permissions, experience, and needs arise, but we are beginning to move forward.

**One way moving around**—tape will be on the floor in the café area and the church, with signs to guide us around the lower part of the building to enable social distancing as much as possible. Entry to the church itself from the café is via the steps or ramp as usual, and exit through the wooden doors or the emergency exit at the bottom of the ramp.



**Use of plastic chairs only**—these are easier to clean after use, and deep cleaning will be vital to keep us all safe. Other chairs will be stacked to one side or in the lower hall, and taped to keep them out of use. You might want to bring your own cushion, but please ensure you take it home afterwards.....



**Face coverings**—while they are not a guarantee of protection they can be part of the armoury we use against the virus, so if you can wear a re-usable material one, please do so; the more people wearing one inside the building, the more the risk is lowered. There are some available if you don't yet have a couple: please contact [admin@sheldonroad.church](mailto:admin@sheldonroad.church) or 01249 444375 to request them.

**Coats and other personal items**— please don't use the coat hooks, but keep coats and other personal items with you.

**Restricted use** – all upstairs rooms will be out of use to begin with and only one person at a time will be permitted in the offices, the vestry/ photocopy room and the bar/kitchen area.



**Reshaped café area**—the tables and chairs will be moved: there will be an “island” of tables through the middle, to form a “dual carriage-way” in this very small but important movement area of the lower part of the building. The chairs will be removed from the area for the time being.

**Sign-in book** by front door with hand sanitiser—if you can bring your own pen it would help to avoid disposable tissues for cleaning!

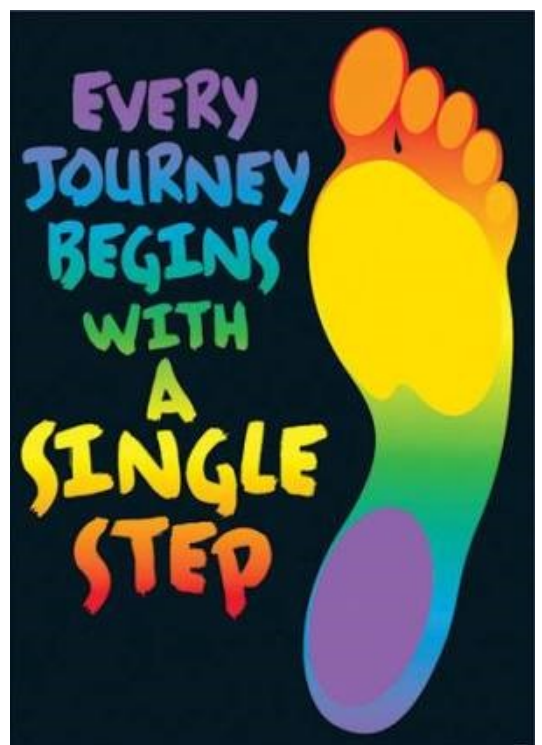


**Limited number of chairs in church**—only some chairs will be available, with current regulation spacing between them, although family groups can move them closer. There will be an overspill space arranged for the lower hall, with an exit to the yard.

**Single person entry to toilet rooms**—due to limited space in each of the toilet rooms, only one person can use the room at a time, so there will be a Vacant/Engaged sign for you to use, on the outer door of each room. Please observe this in order to keep the area clean.



**Refreshments unavailable**—as the kitchen and bar area are so small, it is not possible to arrange for refreshments to begin with as we move forward. You're welcome to bring your own! One person at a time can enter behind the bar into the kitchen, e.g. for a glass of water. Leave empty glasses on the table by the door as you exit.



### ***What meetings can happen?***

To begin with, the building will only be open for one gathering at a time which is organised and controlled by the church. This will start with private prayer meetings, and then move to include Sunday Services when government and Methodist Church guidelines allow. Such gatherings would be organised within social distancing rules in force at the time. We will let you know as soon as we can.

### ***How will we move on?***

We are guided by government and Methodist Church instructions, and the stewards have worked on a full risk assessment before even the first opening can happen. They will continue to revise this plan before making any future changes, based on guidance and experience. Phase 2 might include some mid-week meetings: watch this space!

### ***What can I do?***

Pray—for patience with each other, for decisions to be made, for protection, for the stewards, for courage, for joy! Encourage one another, be hopeful, look forward as we move forward together.

Remember we're all learning together in this exploration into moving forward; things may change from week to week, new adjustments might be needed.

In line with what other organisations are asking, please don't come into the building if you are feeling unwell with what could be symptoms of the virus. Look after yourself—and others.

***If you have any questions, please contact a steward.***

### ***We'll be in touch! It's a work in progress.....***

Stewards for Sheldon Road Methodist Church—*Liz, Calvin, Trevor, Chris B, Chris W, Andy*